



FABRICATED FITTINGS

INDEX

FABRICATED FITTINGS SECTION G

Shackle Straps	Type SHSTRAP..... Page 56
"U" Shackle Straps	Type SHSTRAP..... Page 57
Cross Arm Brace	Type XABRACE... Page 58
Stay Rods and Bows	Type STAY..... Page 59
Saglinks	Type SL Page 60
Yoke Plates	Type YPT Page 61
Link Plates	Type LP & DLP.....Page 62
Guy thimble closed	Type GT..... Page 63
Guy thimble opened	Type OGT..... Page 64
Eye bolt	Type EB..... Page 65

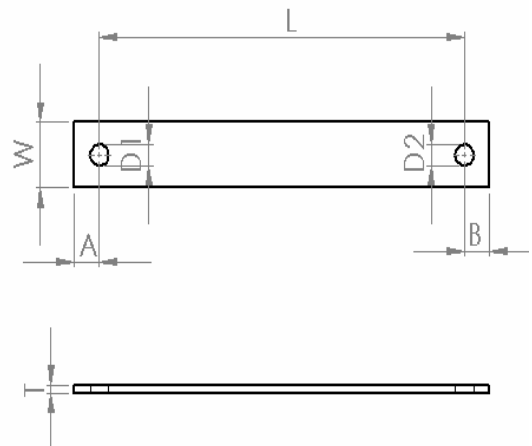
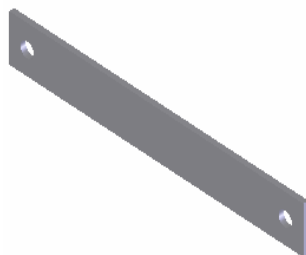


FABRICATED FITTINGS SECTION F

SHACKLE STRAP TYPE SHSTRAP

Catalogue Number	Dimension, mm							Approx. Weight MIN. kg
	A	B	D1	D2	W	T	L	
SHSTRAP3	22	22	16	16	50	6	316	0.85
SHSTRAP4	25	25	18	18	32	5	250	0.66
SHSTRAP1	17	17	14	14	32	5	216	0.6

Material:
Galvanized Steel





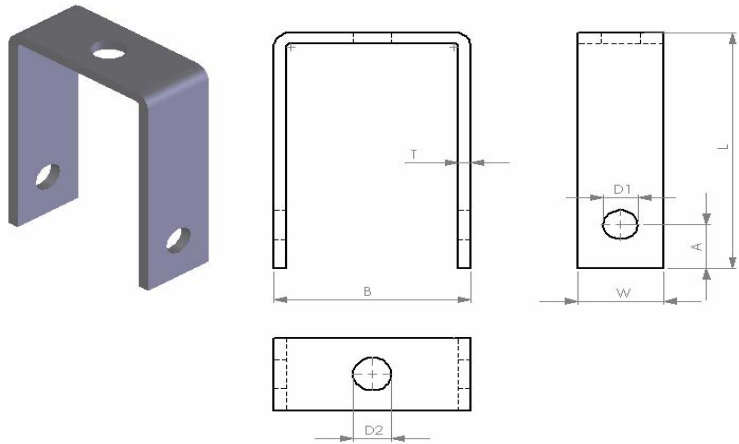
FABRICATED FITTINGS

SECTION F

“U” SHACKLE STRAP TYPE SHSTRAP

Catalogue Number	Dimension, mm							Approx. Weight MIN. kg
	A	B	D1	D2	W	T	L	
SHSTRAP2	22	92	16	18	40	6	130	0.63

Material:
Galvanized Steel



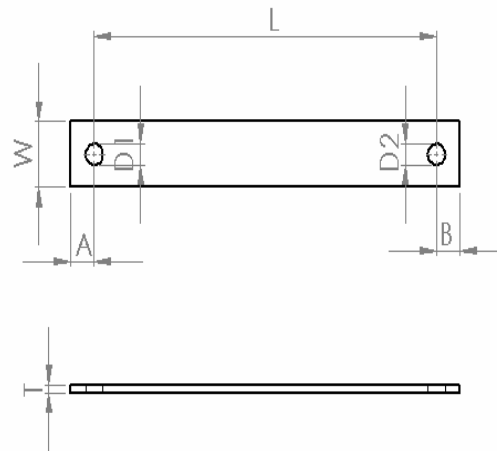
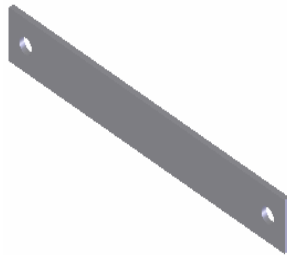


FABRICATED FITTINGS SECTION F

CROSS ARM BRACE TYPE XABRACE

Catalogue Number	Dimension, mm							Approx. Weight MIN. kg
	A	B	D1	D2	W	T	L	
XABRACE04	25	25	18	18	50	6	500	1.3
XABRACE03	25	25	18	18	50	6	800	2.0
XABRACE02	25	25	18	18	50	6	863	2.15
XABRACE01	25	25	18	18	40	6	863	1.9

Material:
Galvanized Steel



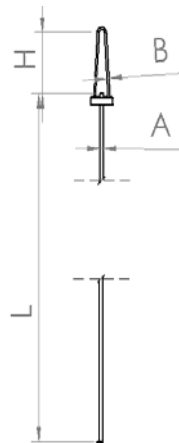


FABRICATED FITTINGS SECTION F

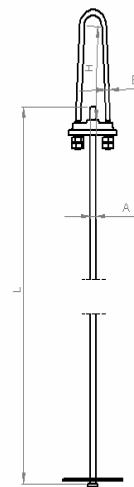
STAY ROD AND BOW TYPE STAY

Catalogue Number	Dimension, mm				Approx. Weight MIN. kg
	A	B	H	L	
STAYPNG1	16	12	355	2000	7.5
STAYPNG2	20	16	355	2000	10.5
STAY 1	20	16	355	2500	11.5

Material:
Galvanized Steel



STAYPNG1
STAYPNG2



STAY 1



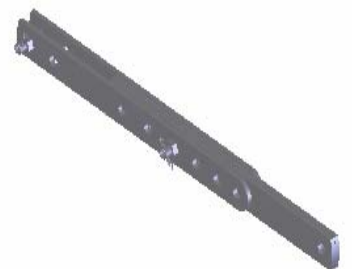
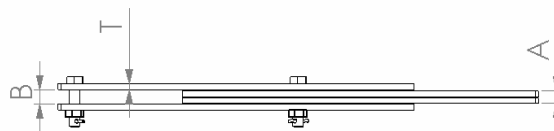
FABRICATED FITTINGS

SECTION F

SAGLINK TYPE SL

Catalogue Number	Minimum Failing Load kN	Dimension, mm					Approx. Weight MIN. kg
		A	B	D	T	L	
SL70	70	16~18	20	18	8	557~974	9.0
SL120	120	16~18	20	18	8	557~974	9.0
SL160	160	20~22	24	22	10	557~974	11.0

Material:
Galvanized Steel





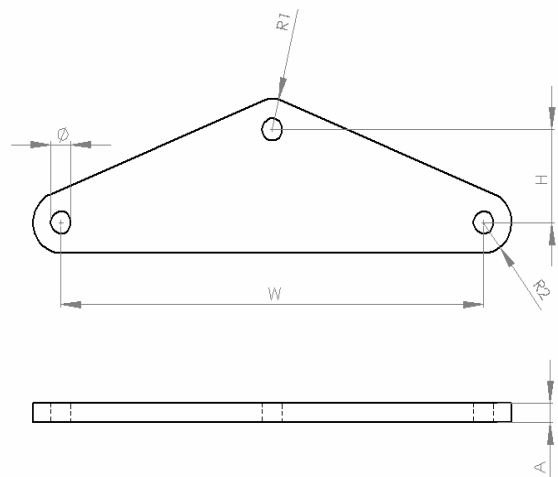
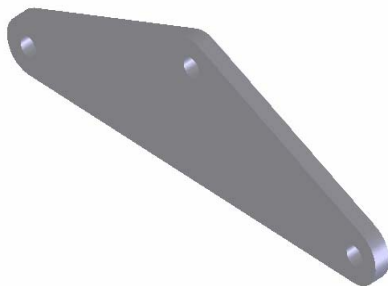
FABRICATED FITTINGS

SECTION F

YOKE PLATE TYPE YPT

Catalogue Number	Minimum Failing Load kN	Dimension, mm						Approx. Weight MIN. kg
		A	H	D	W	R1	R2	
YPT70	70	16	76	18	380	25	25	4.5
YPT120	120	16	76	18	380	25	25	4.5
YPT160	160	20	76	22	380	28	28	5.5

Material:
Galvanized Steel





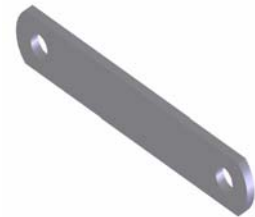
FABRICATED FITTINGS SECTION F

LINK PLATE TYPE LP & DLP

Catalogue Number	Catalogue Number	Hole Center Distance mm
DLP-70-100	LP-70-100	100
DLP-70-150	LP-70-150	150
DLP-70-200	LP-70-200	200
DLP-70-250	LP-70-250	250
DLP-70-300	LP-70-300	300
DLP-70-350	LP-70-350	350

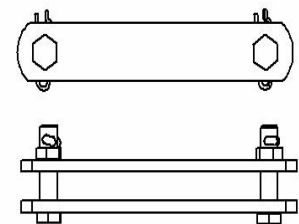
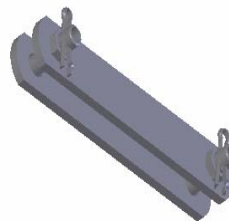
Single link plates are available in 70/120/160 ratings and various lengths.

Please contact us with your requirements.



Single link plate

Material:
 Body - Galvanized steel
 Hardware - Galvanized steel
 Split pin - Stainless steel



Link Plate Assembly

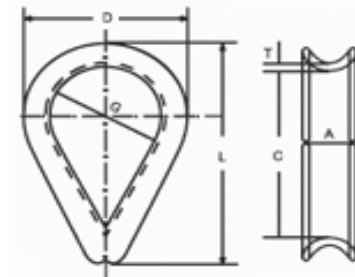


FABRICATED FITTINGS SECTION F

GUY THIMBLE TYPE GT

Catalogue Number	Dimension, mm						Approx. Weight Per 100 kg
	L	C	D	G	A	T	
GT-10	60	41	37	24	10.5	2	2.6
GT-12	70	48	45	29	13.5	2.5	5.25
GT-16	89	57	60	35	17	3	10.5
GT-20	95	63.5	68	41.5	20	3	21
GT-22	127	89	81	48	24	3.2	35.7

Material:
Galvanized Steel



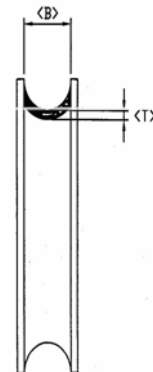
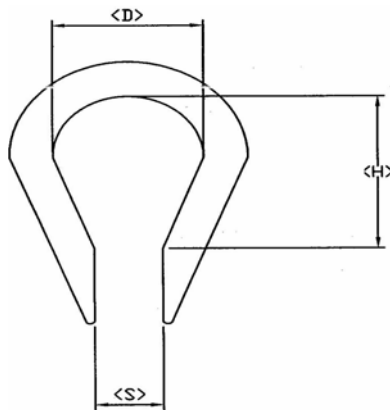


FABRICATED FITTINGS SECTION F

OPEN GUY THIMBLE TYPE OGT

Catalogue Number	Dimension, mm					Approx. Weight Per 100 kg
	S	D	H	B	T	
OGT-10	12	28	43	11	1.75	1.7
OGT-12	14	30	50	13	2	3.25
OGT-16	18	35	57	17	2.5	6.4
OGT-20	22	47	70	21	2.5	13

Material:
Galvanized Steel



FABRICATED FITTINGS SECTION F



EYE BOLT TYPE EB

Catalogue Number	Dimension, mm				Approx. Weight kg	Catalogue Number	Dimension, mm				Approx. Weight kg
	L	M	D	ϕ			L	M	D	ϕ	
EB16-150	150	16	38	16	0.45	EB20-150	150	20	38	20	0.68
EB16-200	200				0.53	EB20-200	200				0.81
EB16-250	250				0.61	EB20-250	250				0.95
EB16-300	300				0.70	EB20-300	300				1.08
EB16-350	350				0.78	EB20-350	350				1.22
EB16-400	400				0.89	EB20-400	400				1.35
EB16-450	450				0.99	EB20-450	450				1.50
EB16-500	500				1.07	EB20-500	500				1.64
EB16-600	600				1.23	EB20-600	600				1.77

Material:
Galvanized Steel

