



STRAIN AND SUSPENSION CLAMPS

INDEX

STRAIN AND SUSPENSION CLAMPS SECTION D

| | |
|----------------------------------|----------------------------|
| Aluminum Suspension Clamp | Type BPS-ASC.....Page D-2 |
| Aluminum Trunnion Support Clamp | Type BPS-TSC.....Page D-3 |
| Cast Iron Suspension Clamp | Type BPS-DSC.....Page D-4 |
| Cast Iron Trunnion Support Clamp | Type BPS-DTSC.....Page D-5 |
| Aluminum Deadend / Strain Clamp | Type BPS-ATC.....Page D-7 |
| Cast Iron Deadend / Strain Clamp | Type BPS-DTC..... Page D-8 |

STRAIN AND SUSPENSION CLAMP SECTION E



SUSPENSION - ALUMINUM CLAMP TYPE BP- ASC

For standard voltage application with AAC, AAAC, and ACSR conductor.

Material:

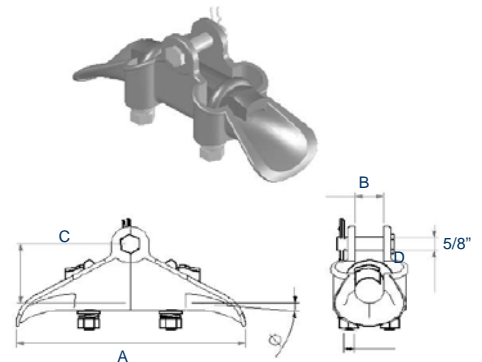
Body & Keeper - Aluminum alloy

Hardware - Galvanized steel

Split Pin - Stainless steel

| CATALOG NUMBER | CLAMPING RANGE INCHES (MM) | ULTIMATE BODY STRENGTH LBS. (KN) | MAX. TAKEOFF ANGLE | DIMENSIONS INCHES (MM) | | | | APPROX WT. EACH LBS. (KG) |
|----------------|----------------------------|----------------------------------|--------------------|------------------------|------------------|-----------------|-------------|---------------------------|
| | | | Ø | A | B | C | D | |
| BP-ASC-5085 | .20-.33 (5.0-8.5) | 11,240 (50) | 20° | 7 (178) | 11/16 (17.5) | 2-1/8 (54) | 1/2 (12) | 2.6 (12) |
| BP-ASC-71130 | .28-.51 (7.1-13.0) | 11,240 (50) | 20° | 7-1/2 (190) | 11/16 (18) | 2-1/8 (54) | 1/2 (12) | 3.1 (14) |
| BP-ASC-110185 | .43-.73 (11.0-18.5) | 11,240 (50) | 20° | 7-1/16 (180) | 7/8 (22) | 2-1/16 (53) | 1/2 (12) | 3.3 (15) |
| BP-ASC-178235 | .69-.93 (17.8-23.5) | 11,240 (50) | 20° | 8-7/8 (226) | 1-1/8 (28) | 2-15/16 (74) | 1/2 (12) | 5.1 (2.3) |
| BP-ASC-230320 | .91-1.26 (23.0-32.0) | 13,500 (60) | 20° | 10-5/16 (262) | 1-3/8 (35) | 3-7/16 (87) | 1/2 (12) | 6.8 (3.1) |
| BP-ASC-250350 | .98-1.38 (25.0-35.0) | 13,500 (60) | 20° | 10-5/16 (262) | 1-1/2 (38) | 3-7/16 (87) | 1/2 (12) | 7.7 (3.5) |
| BP-ASC-270390 | 1.06-1.54 (27.0-39.0) | 15,750 (70) | 20° | 9-1/16 (230) | 1-9/16 (40) | 2-1/8 (54) | 1/2 (12) | 8.6 (3.9) |
| BP-ASC-280412 | 1.10-1.62 (28.0-41.2) | 15,750 (70) | 20° | 9-1/2 (241) | 1-11/16 (43) | 3-1/16 (78) | 1/2 (12) | 9.9 (4.5) |
| BP-ASC-356518 | 1.40-2.04 (35.6-51.8) | 15,750 (70) | 20° | 10-1/2 (267) | 2-1/8 (54) | 3-3/4 (95) | 1/2 (12) | 10.6 (4.8) |
| BP-ASC-445572 | 1.75-2.25 (44.5-57.2) | 15,750 (70) | 20° | 11 (280) | 2-5/16 (58.7) | 3-3/4 (95) | 5/8 (16) | 11.2 (5.1) |

NOTE: Add an "S" to the suffix of the catalog number for a socket fitting or a "C" for a clevis fitting.
Socket and clevis are comprised of ductile iron or galvanized material.





STRAIN AND SUSPENSION CLAMP SECTION E

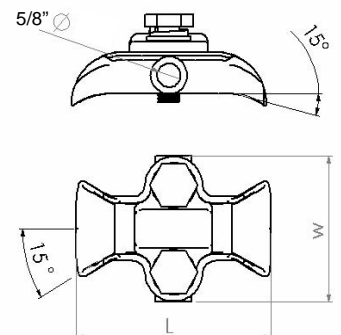
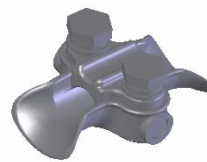
TRUNNION - ALUMINUM SUPPORT CLAMP TYPE BP-TSC

For standard voltage application with AAC, AAAC, and ACSR conductor.

Designed for use on tangent suspension spans with horizontal or vertical post insulators.

Material:
Body & Keeper - Aluminum alloy

| CATALOG NUMBER | CLAMPING RANGE INCHES (MM) | ULTIMATE BODY STRENGTH LBS. (KN) | DIMENSIONS INCHES (MM) | | | APPROX. WT. EACH LBS. (KG) |
|----------------|----------------------------|----------------------------------|------------------------|---------------|-------------|----------------------------|
| | | | L | W | BOLT SIZE | |
| BP-TSC-0614 | .25-.57 (6.3-14.4) | 2,700 (12) | 5-1/4 (133) | 3-7/8 (99) | 1/2 (12) | 1.1 (0.5) |
| BP-TSC-0921 | .35-.56 (8.8-21.8) | 2,700 (12) | 5-1/4 (133) | 3-7/8 (99) | 1/2 (12) | 1.1 (0.5) |
| BP-TSC-1327 | .50-1.06 (12.7-26.9) | 2,700 (12) | 5-1/4 (133) | 3-7/8 (99) | 1/2 (12) | 1.3 (0.6) |
| BP-TSC-2538 | 1.00-1.50 (25.4-38.1) | 2,700 (12) | 5-1/4 (133) | 3-7/8 (99) | 1/2 (12) | 1.3 (0.6) |



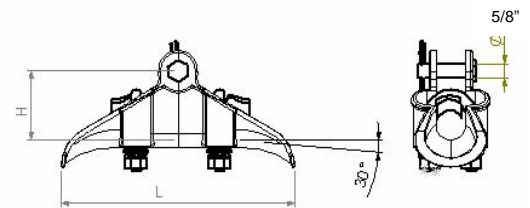


STRAIN AND SUSPENSION CLAMP

SECTION E

SUSPENSION - CAST IRON CLAMP TYPE BP- DSC

| CATALOG NUMBER | CLAMPING RANGE INCHES (MM) | ULTIMATE BODY STRENGTH LBS. (KN) | DIMENSIONS INCHES (MM) | | APPROX WT. EACH LBS. (KG) |
|----------------|----------------------------|----------------------------------|------------------------|-----------------|---------------------------|
| | | | L | H | |
| BP-DSC-5085 | .20-.33 (5.0-8.5) | 11,240 (50) | 7 (178) | 2-1/8 (54) | 4.4 (2.0) |
| BP-DSC-71130 | .29-.51 (7.1-13.0) | 11,240 (50) | 7-1/2 (190) | 2-1/8 (54) | 5.3 (2.4) |
| BP-DSC-110185 | .43-.73 (11.0-18.5) | 11,240 (50) | 7-1/16 (180) | 2-1/16 (53) | 6.8 (3.1) |
| BP-DSC-178235 | .69-.93 (17.8-23.5) | 11,240 (50) | 8-7/8 (226) | 2-15/16 (74) | 8.4 (3.8) |
| BP-DSC-230320 | .91-1.26 (23.0-32.0) | 13,500 (60) | 10-5/16 (262) | 3-7/16 (87) | 10.8 (4.9) |



For standard voltage application with galvanized steel cable with or without armor rods.

Type MS may also be used to suspend copper or copperweld cable.

Material:

Body & Keeper – Ductile iron, galvanized
Hardware - Galvanized steel
Split Pin - Stainless steel



STRAIN AND SUSPENSION CLAMP SECTION E

TRUNNION - CAST IRON SUPPORT CLAMP TYPE BP - DTSC

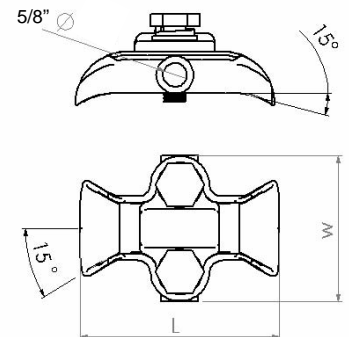
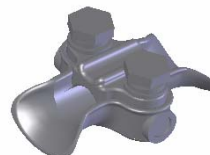
| CATALOG NUMBER | CLAMPING RANGE INCHES (MM) | ULTIMATE BODY STRENGTH LBS. (KN) | DIMENSIONS INCHES (MM) | | | APPROX. WT. EACH LBS. (KG) |
|----------------|----------------------------------|--|---------------------------|-----------------|-------------|----------------------------------|
| | | | L | W | BOLT SIZE | |
| BP-DTSC-0614 | .25-.56 (6.13-14.2) | 2,700 (12) | 5-1/4 (133) | 3-7/8 (98.5) | 1/2 (12) | 2.4 (1.1) |
| BP-DTSC-1327 | .50-1.06 (12.7-26.9) | 2,700 (12) | 5-1/4 (133) | 3-7/8 (98.5) | 1/2 (12) | 2.7 (1.2) |
| BP-DTSC-2538 | 1.06-1.50 (26.9-38.1) | 2,700 (12) | 5-1/4 (133) | 3-7/8 (98.5) | 1/2 (12) | 2.9 (1.3) |

For standard voltage application with galvanized Steel cable.

Designed for use on tangent suspension spans with horizontal or vertical post insulators.

Keepers are reversible for proper fit on different size conductors.

Material:
Body & Keeper – Ductile iron, galvanized



STRAIN AND SUSPENSION CLAMP SECTION E

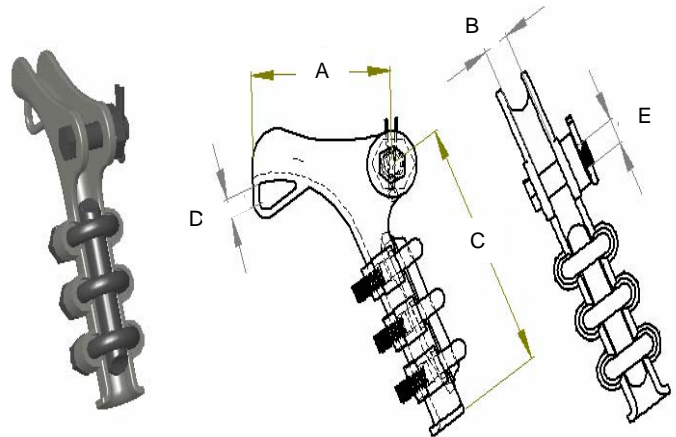


ALUMINUM DEADEND / STRAIN CLAMP TYPE ATC

| CATALOG NUMBER | CLAMPING RANGE INCHES (MM) | ULTIMATE BODY STRENGTH LBS. (KN) | DIMENSIONS INCHES (MM) | | | | | U-BOLTS | | APPROX. WT. EACH LBS. (KG) |
|----------------|----------------------------|----------------------------------|------------------------|-----------------|------------------|---------------|----------------|---------|------------------|----------------------------|
| | | | A | B | C | D | E | NO. | SIZE INCHES (MM) | |
| BPS-ATC-5114 | .20-.64 (5.1-11.4) | 9,000 (40) | 7-1/16 (180) | 3/4 (19) | 5 (126) | 13/16 (20) | 5/8 (16) | 2 | 1/2 (12) | 1.1 (0.5) |
| BPS-ATC-89185 | .30-.75 (8.9-18.5) | 9,000 (40) | 7-3/8 (187) | 15/16 (24) | 6-15/16 (176) | 1-1/4 (32) | 5/8 (16) | 2 | 1/2 (12) | 4.0 (1.8) |
| BPS-ATC-50150 | .46-.94 (5.0-15.0) | 15,750 (70) | 8 (203) | 11/16 (17.5) | 7-1/2 (190) | 13/16 (20) | 5/8 (15.88) | 3 | 1/2 (12) | 4.2 (1.9) |
| BPS-ATC-121218 | .50-1.20 (12.1-21.8) | 15,750 (70) | 11-3/16 (284) | 1-3/16 (30) | 11-3/4 (298) | 1-1/4 (32) | 3/4 (20) | 4 | 1/2 (12) | 9.0 (4.1) |
| BPS-ATC-180300 | .70-1.39 (18.0-30.0) | 15,750 (70) | 13-1/2 (342) | 1-7/16 (36) | 17-9/16 (446) | 1-1/2 (38) | 3/4 (20) | 5 | 1/2 (12) | 15.4 (7.0) |

For distribution and light transmission construction with AAC, AAAC or ACSR conductor.

Material:
Body & Keeper – Aluminum alloy
Hardware – Galvanized steel
Split pin - Stainless steel





STRAIN AND SUSPENSION CLAMP

SECTION E

CAST IRON DEADEND / STRAIN CLAMP TYPE DTC

| CATALOG NUMBER | CLAMPING RANGE INCHES (MM) | ULTIMATE BODY STRENGTH LBS. (KN) | DIMENSIONS INCHES (MM) | | | | | U-BOLTS | | APPROX. WT. EACH LBS. (KG) |
|----------------|----------------------------|----------------------------------|------------------------|----------------|-----------------|---------------|-------------|---------|------------------|----------------------------|
| | | | A | B | C | D | E | NO. | SIZE INCHES (MM) | |
| BPS-DTC-89185 | .35-.75 (8.9-18.5) | 15,750 (70) | 4-1/4 (108) | 3/4 (19) | 4-1/16 (104) | 15/16 (24) | 5/8 (16) | 2 | 1/2 (12) | 4.0 (1.8) |
| BPS-DTC-50150 | .20-.59 (5.0-15.0) | 15,750 (70) | 5-1/8 (130) | 3/4 (19) | 8-1/16 (205) | 1-1/8 (28) | 5/8 (16) | 2 | 1/2 (12) | 4.6 (2.1) |
| BPS-DTC-89200 | .35-.79 (8.9-20.0) | 15,750 (70) | 5-1/8 (130) | 13/16 (21) | 8-1/16 (205) | 1-1/8 (28) | 5/8 (16) | 3 | 1/2 (12) | 5.3 (2.4) |
| BPS-DTC-121218 | .47-.87 (12.1-21.8) | 15,750 (70) | 13-1/2 (342) | 1-3/16 (30) | 11-3/4 (298) | 1-1/4 (32) | 5/8 (16) | 4 | 1/2 (12) | 10.8 (4.9) |

Designed for deadending steel conductors.

May be used to terminate copper conductor.

Material:

Body & Keeper – Galvanized ductile iron

Hardware - Galvanized steel

Split pin - Stainless steel

